

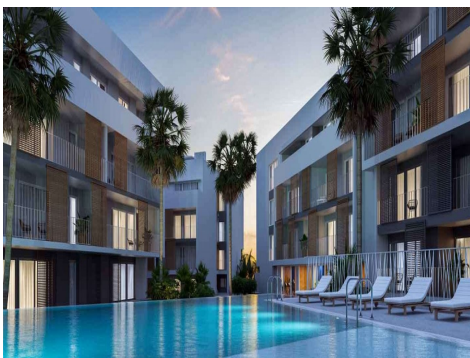
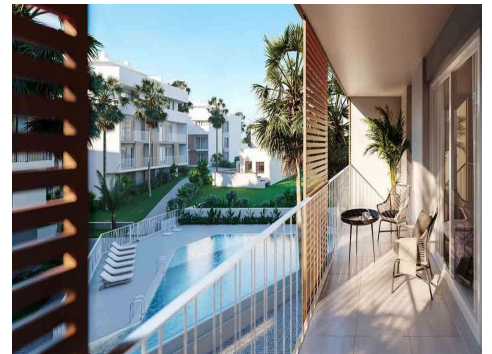
Ref: SP0061

Price: 555,000€



- Penthouse**
- Javea Xabia**
- 3**
- 2**
- 175m² Build Size**
- Pool: Yes**

NEW RESIDENTIAL IN JAVEA 5 MINUTES FROM THE BEACH, THE PORT AND THE CENTER !!! New residential a few minutes from the beach that consists of 58 homes with 2, 3 and 4 bedrooms distributed on the ground floor with a garden, apartments with terraces on intermediate floors, penthouses and duplexes with large terraces. In addition, all homes will have a garage and storage room. The residential complex will have a swimming pool and a social club. You can configure different aspects in the distribution, finishes and extra options of your home. Adapt your new home to your tastes an...(Ask for More Details!)



NEW RESIDENTIAL IN JAVEA 5 MINUTES FROM THE BEACH, THE PORT AND THE CENTER !!!
New residential a few minutes from the beach that consists of 58 homes with 2, 3 and 4 bedrooms distributed on the ground floor with a garden, apartments with terraces on intermediate floors, penthouses and duplexes with large terraces. In addition, all homes will have a garage and storage room. The residential complex will have a swimming pool and a social club.
You can configure different aspects in the distribution, finishes and extra options of your home. Adapt your new home to your tastes and preferences and create the environment you have always wanted.
With interiors cared for in detail, the exterior of the house could not be less. Perfectly combining avant-garde trends and the timeless elegance of the most classic constructions, the beautiful aesthetic of the building lies in its façade through textures and colors integrated into its surroundings.
Enjoying your new home in a magnificent location, with everything you need at your fingertips: restaurants, pharmacies, supermarkets, health centers, and the Molins De La Plana, a green lung in Jávea. In addition, in the vicinity of your new construction home you will find the Jávea bus station and the CV-734 road for easy access.