


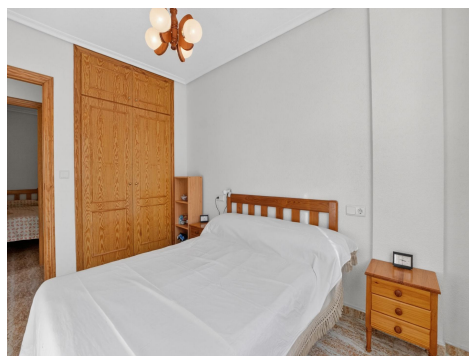
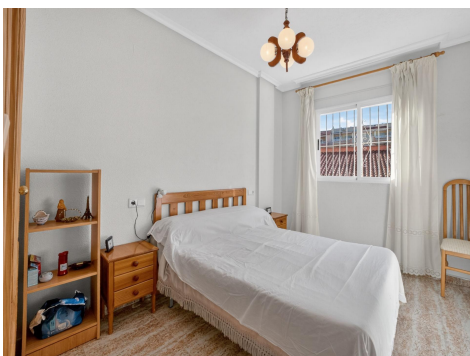
Ref: JJ-56928

Price: 149,900€



-  **Apartment**
-  **Torre Vieja**
-  **2**
-  **1**
-  **65m<sup>2</sup> Build Size**

Apartment for sale 350 metres from Playa de Los Locos with private closed garage~~A well-maintained apartment, ready to move into, located in a gated residential complex just 350 metres from Playa de Los Locos. An excellent option both as a permanent home near the sea and as an investment in one of the most sought-after areas of Torre Vieja.~~The property is on the first floor with lift access and has 65 m2 built, with a practical and comfortable layout.~~It offers 2 bedrooms, 1 bathroom, a living-dining room with air conditioning, an independent kitchen, and a terrace of approximately 10 m2 wi...(Ask for More Details!)



Apartment for sale 350 metres from Playa de Los Locos with private closed garage~~A well-maintained apartment, ready to move into, located in a gated residential complex just 350 metres from Playa de Los Locos. An excellent option both as a permanent home near the sea and as an investment in one of the most sought-after areas of Torrevieja.~~The property is on the first floor with lift access and has 65 m2 built, with a practical and comfortable layout.~~It offers 2 bedrooms, 1 bathroom, a living-dining room with air conditioning, an independent kitchen, and a terrace of approximately 10 m2 with southeast orientation, ideal for enjoying natural light and the Mediterranean climate.~~The property also includes a private closed garage of around 15 m2 in the same building, a very valuable feature in such a convenient location close to the beach.~~The gated residential complex provides privacy and peace of mind, making this apartment a practical, comfortable and attractive property with strong potential for both personal use and rental investment.~~A ready-to-enjoy home just a short walk from the sea, with good orientation, air conditioning and the added advantage of a private closed garage in the same building.~