

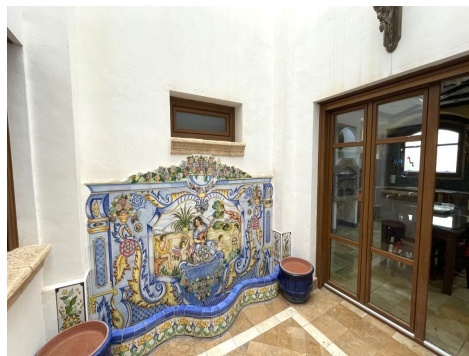
Ref: WE-89491

Price: 1,265,000€



- Townhouse**
- Torre Vieja**
- 4**
- 3**
- 542m² Build Size**
- 150m² Plot Size**

Fabulous, one of a kind townhouse with a build size of 542m² and located very close to the center of Torre Vieja. This high quality property was designed & built by the current owners with all the features of the house being carefully chosen to best represent its incredible architecture. Entering the ground floor hallway you are met with handcrafted Italian ardesia tiles and a main staircase leading to the first floor, and offering a grand living area with Venetian accents, a beautifully fitted kitchen, utility room, pantry and access to two large terrace areas providing plenty (ask for more details) for more details!



Fabulous, one of a kind townhouse with a build size of 542m² and located very close to the center of Torrevieja. This high quality property was designed & built by the current owners with all the features of the house being carefully chosen to best represent its incredible architecture. Entering the ground-floor hallway you are met with handcrafted, Italian, mosaic tiles and a marble staircase leading to the first-floor, and offering a grand living area with Venetian curtains, a beautiful fully-fitted kitchen, with utility-room, pantry and access to two large terraced areas providing plenty of natural sunlight to the spaces, an office and guest washroom. The second-floor presents the four bedrooms, including the large, master with private en-suite bathroom & walk-in wardrobe and a family-size bathroom. The top floor has a large, open-plan living area that the current owners have turned into a library/work space and access to the private solarium featuring a large storage room. The main entrance has access to a very large, private garage where you can park several vehicles, has room for storage & features a family-size bathroom. Also including an underbuild where you can find another large living area with specially designed windows that replicate natural sunlight and a temperature regulated wine cellar. The house itself has been elevated thus preventing damp & its structure is anti-seismic. All the doors are handcrafted, all the shutters are electric & the property also features marble floors with underground heating, air-conditioning, an alarm-system, all lights are LED, PVC windows, &..... a lift with access to every floor! Book a viewing with one of our agents & find your dream home today!